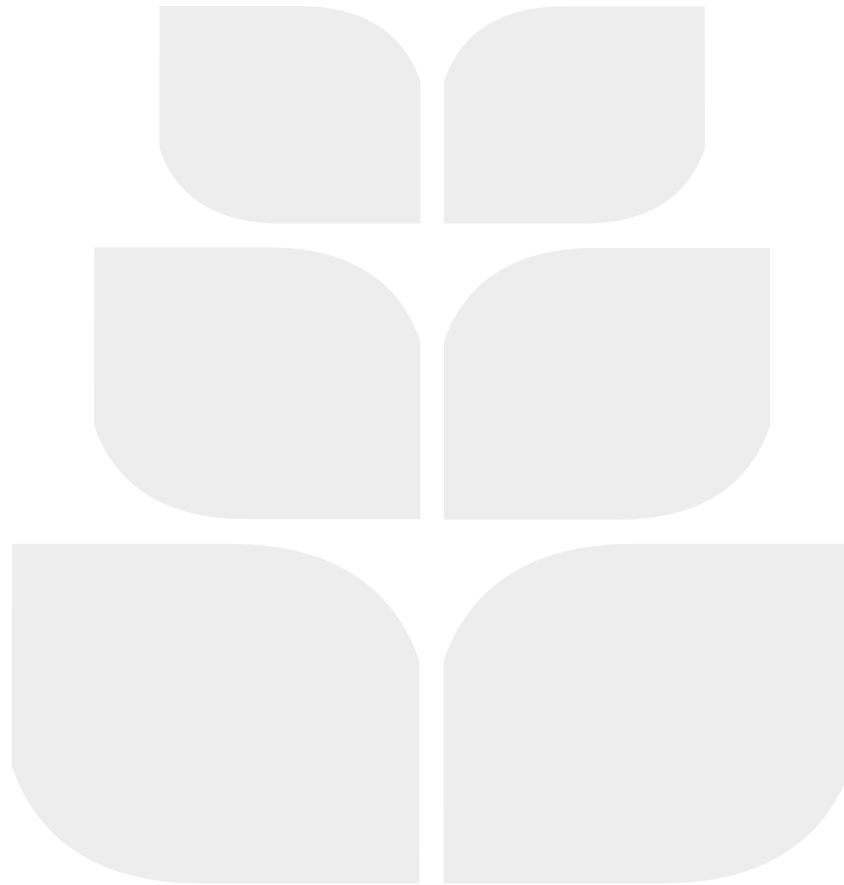


Make every moment of your child's life a Milestone



impact[®]
milestone

RP International Pvt. Ltd. is a premium Real Estate Development Company, promoted by the renowned IMPACT Group in UAE.

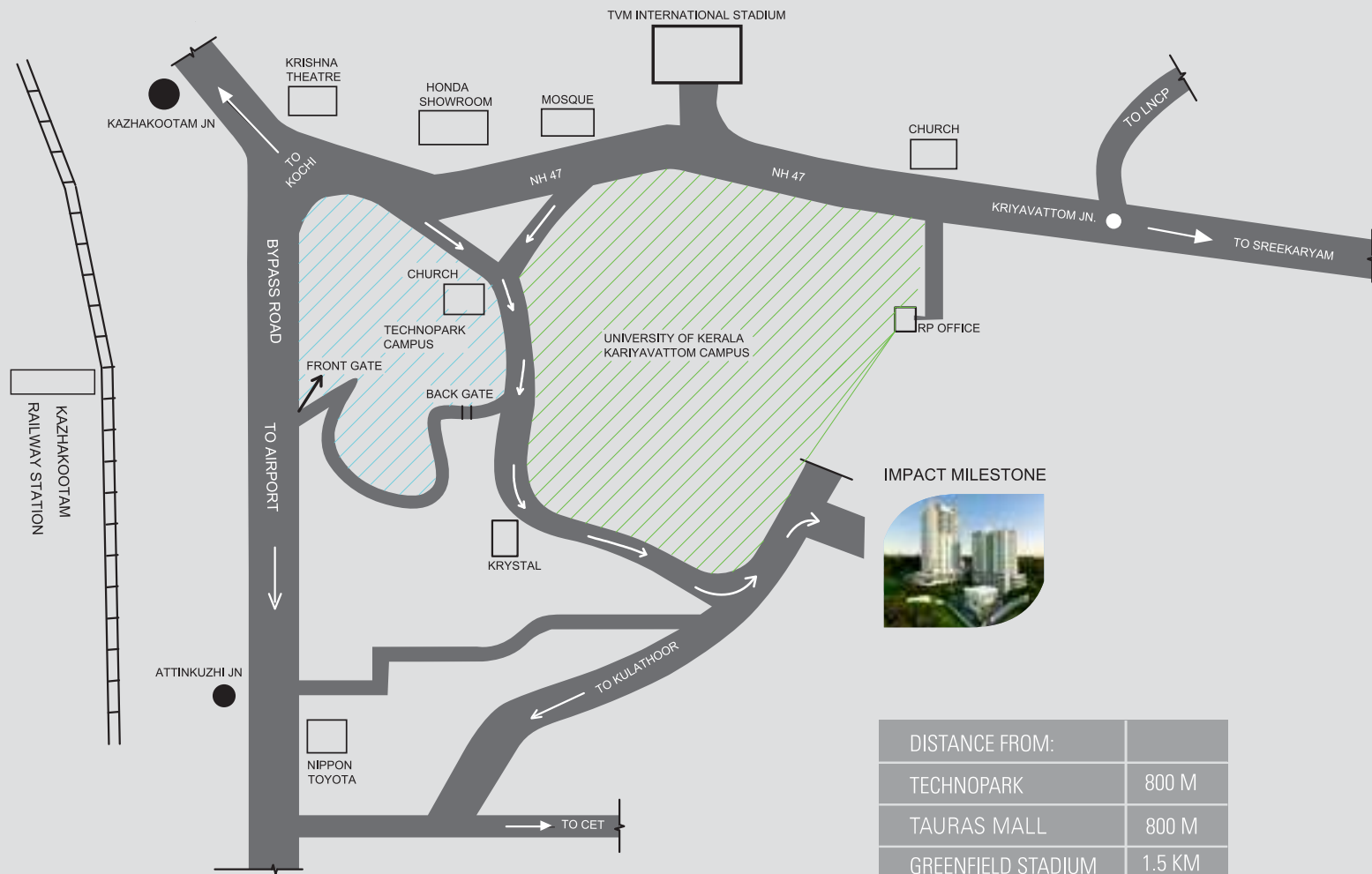
IMPACT Advertising, the group's flagship company, was established in Dubai in the year 1991 and has more than 2 decades of laudable international experience in the Gulf region. Emerging with a diversification plan, IMPACT has extended its brand equity, venturing into the Indian realm of Real Estate development.

True to the Impact Spirit, its owner Mr. Robinson has moved ahead with core competencies and an unstinting determination to launch this Magnum Opus Project 'Impact Milestone'.

A real milestone, as the name indicates, endeavouring to create a collage of contemporary lifestyle, fine tuned with aesthetics.

Complete customization for the discerning clientele.

LOCATION MAP - IMPACT MILESTONE, KARIYAVATTOM



DISTANCE FROM:	
TECHNOPARK	800 M
TAURAS MALL	800 M
GREENFIELD STADIUM	1.5 KM
KAZHAKOOTAM STN	2.5 KM
LULU MALL	7.2 KM
AIRPORT	11 KM

Amenities

- State of the art design and construction of international standards
- Designer entrance lobbies
- Swimming pool with kid's pool
- Separate Air-conditioned fitness centre for ladies and gents
- Party hall
- Exclusive crèche for the tenants
- Solar assisted lighting for common area and landscaping
- Ample guest parking
- Exquisite landscape with water bodies, fountains etc.
- Children's play area
- Reticulated LPG supply
- Driver's room with toilet.
- Shuttle court
- Steam bath
- Billiards
- Grocery

Specifications*

Structure

- Deep pile foundation complying with seismic 3zone requirements
- RCC frame structure with concrete block partitions.
- All plumbing services passes through the walls are solid block). Concrete grade and steel grade as per structural consultant's specifications.

Flooring & Tiling

- Lift lobby and fascia wall & floor using granite slabs / vitrified tiles.
- Staircases using vitrified tile flooring with hand railing using MS section.
- Foyer/Living / Dining / Bed Rooms/ Kitchen using vitrified tiles of good quality
- RAK/Kajaria/Nitco or equivalent
- Toilets: Ceramics tile for the floor and for the walls up to full height
- Balconies: Rustic or antiskid ceramics tiles and railing up to 120 cm height

Sanitary & Plumbing

- Wall hung/floor mounted closet with cistern, countertop/semi pedestal washbasins as per the design of RAK/Hindware or equivalent make.
- 3 in 1 diverter mixer, overhead shower, health faucet etc of jaguar or equivalent make.
- ISI brand supply lines.
- CP,taps and fittings of jaguar or equivalent make
- Good quality stainless steel sink for kitchen / W.A

Doors & Windows

- Double glazed Window- UPVC windows , balcony doors
UPVC double glazed sliding doors.
- Internal doors - Panelled shutter doors with frame.
- Good quality hardwares and locks of Doorset/Godrej or equivalent

Electrical

- Concealed copper wiring using finolex or equivalent make
- Switches: All switches shall be Legrand or equivalent make
- Generator: Power backup will be provided for all common services and selected light and fan point in each living, bedroom inside apartment and a refrigerator point except Air –conditioning and Geyser points.
- ELCB and MCBs shall be provided in each apartment.
- Provision for the geyser points exhaust air fans shall be provided for all toilets
- Provision for the telephone and internet shall be provided at one point in each apartment.

Painting

- Emulsion paint Asian / Berger or equivalent shall be applied in the common area, utility, service areas.
- Emulsion paint Asian / Berger or equivalent shall be applied for the ceiling inside apartments.
- Internal walls: Acrylic/ White cement based putty with emulsion point roller finish
- External walls: Antifungal exterior emulsion Apex/ Weather shield or equivalent

Elevators

- Elevators: Lifts shall be provided as per the Govt. Norms in each core with automatic doors of KONE, OTIS, Johnson or any other reputed make.

The information and materials contained or referred to on this brochure are for informational purposes only which are subjected to change without notice and the same should not be construed as legal advice on any subject matter.

Our Bankers



Interior and Landscaping



UAE: Impact Advertising P.O. Box 22639, Sharjah, UAE., Tel : +971 6 5339544, Fax : +971 6 5339427, e-mail : info@impact-adv.ae www.impact-adv.ae

INDIA: Robinson Properties International (Pvt.) Ltd., Impact Rose Gardens, Karyavattom P.O., Thiruvananthapuram-695 581, Kerala, India, Tel.: +91 471 2414004 /+91 9544377299 E-mail: info@rpdevelopers.com

CHINA: Impact Advertising Co., Ltd., Dado, Tianhe, Guangzhou City, China, Tel : +86 20 82316371, Fax : +86 20 82316371

www.robinsonproperties.in

ROBINSONS
Robinson Properties International (Pvt.) Ltd.

Robinson Properties International (Pvt.) Ltd.

Impact Rose Gardens, Karyavaltom P.O., Thkuvananthapuram-695 581, Kerala, India, Tel :
+91 9544 377 699

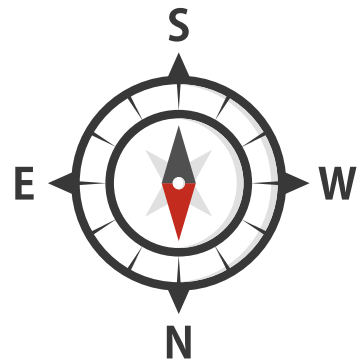
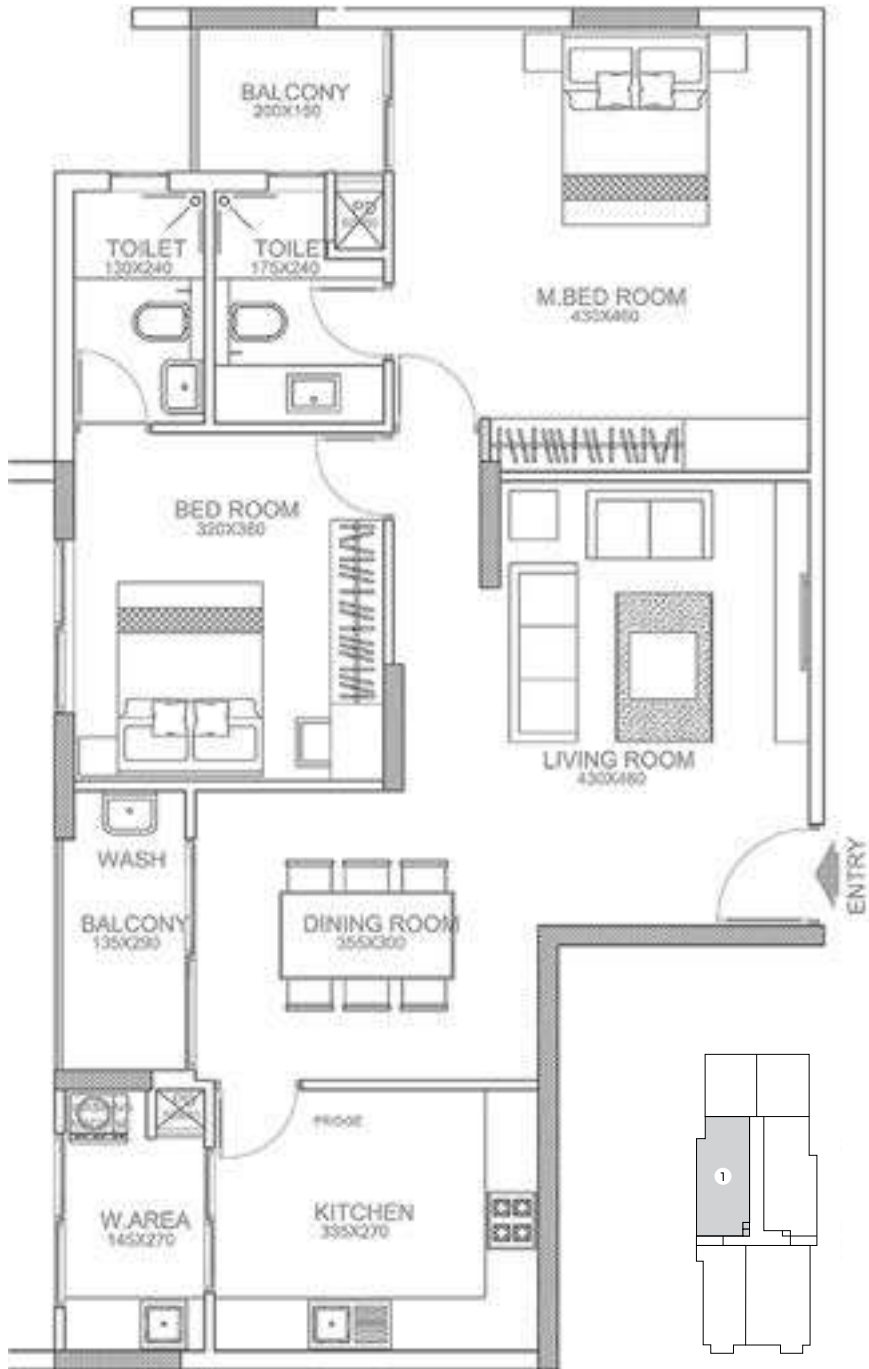


The Big Focus on Little Lives

Impact Milestone was conceived as a home for a young family with growing children. Along with prescribing nothing but the very best for the most selective of homeowners, we've also fashioned the ideal environment for your children to develop. You children enjoy access to a dedicated playground and can also dive in for swimming lessons with certified coaches. Working parents have the privilege of leaving their child under the care of trained professionals at the daycare and crèche facilities. Our team of trained educators will also ensure that they get help with their homework. So, rest assured, your time at home will truly be family time, every time.



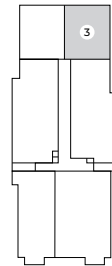
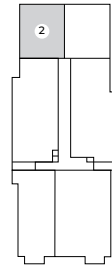
FLOOR PLAN - TOWER A



TYPE 1
2BHK 1380 SQFT

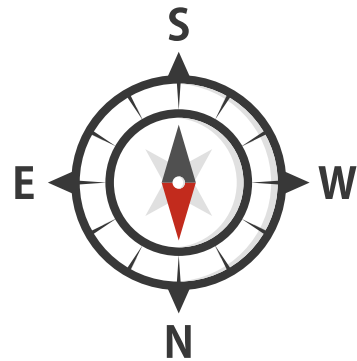


FLOOR PLAN - TOWER A



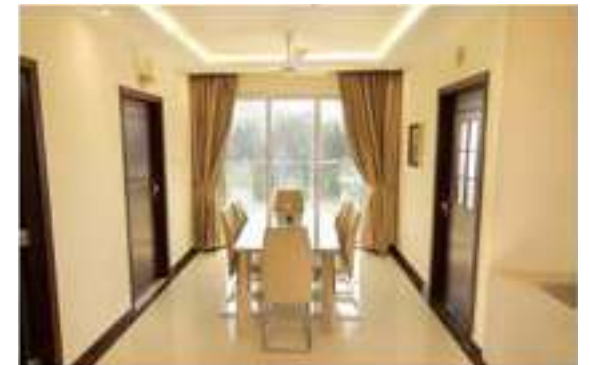
TYPE 2

2BHK 1265 SQFT

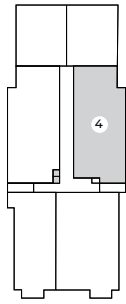
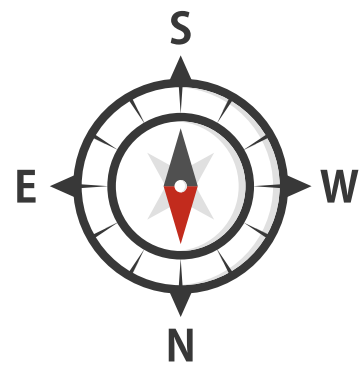


TYPE 3

2BHK 1265 SQFT



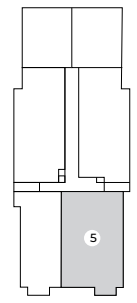
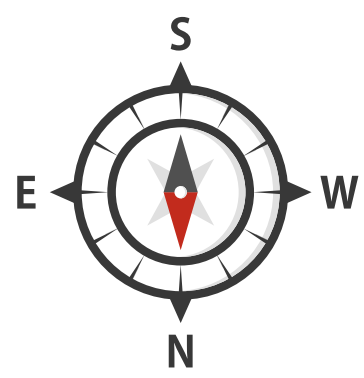
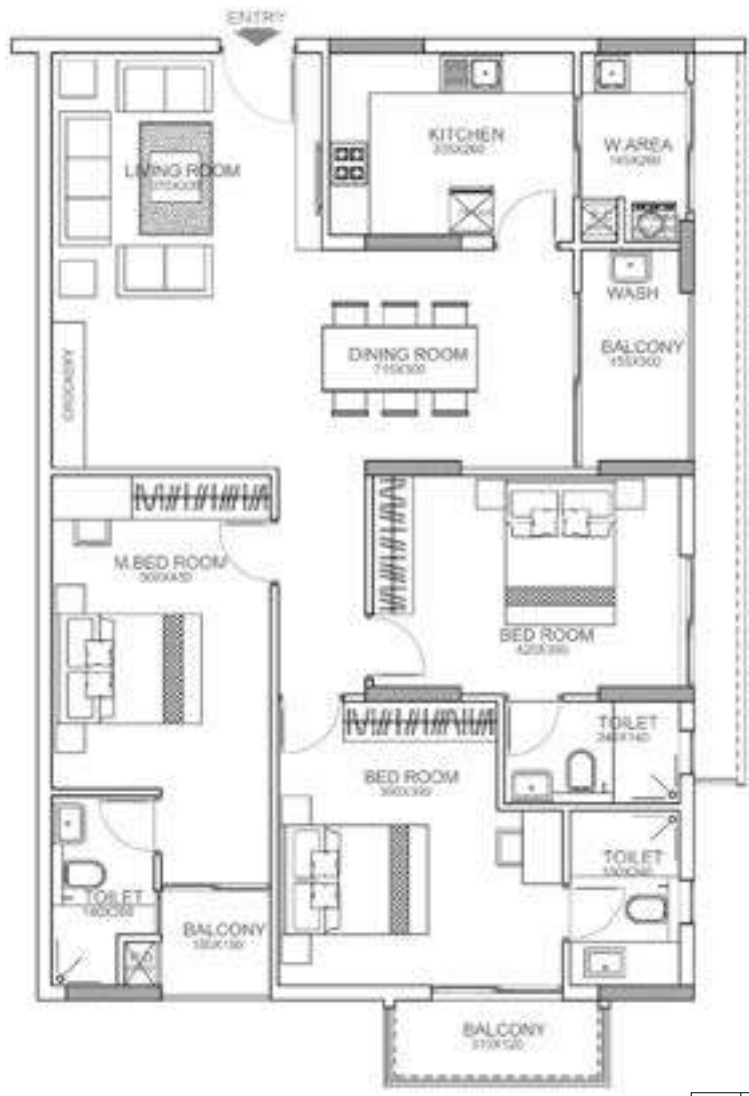
FLOOR PLAN - TOWER A



TYPE 4
2BHK 1265 SQFT



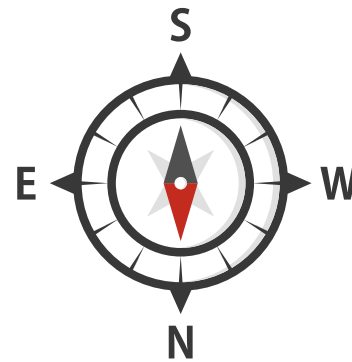
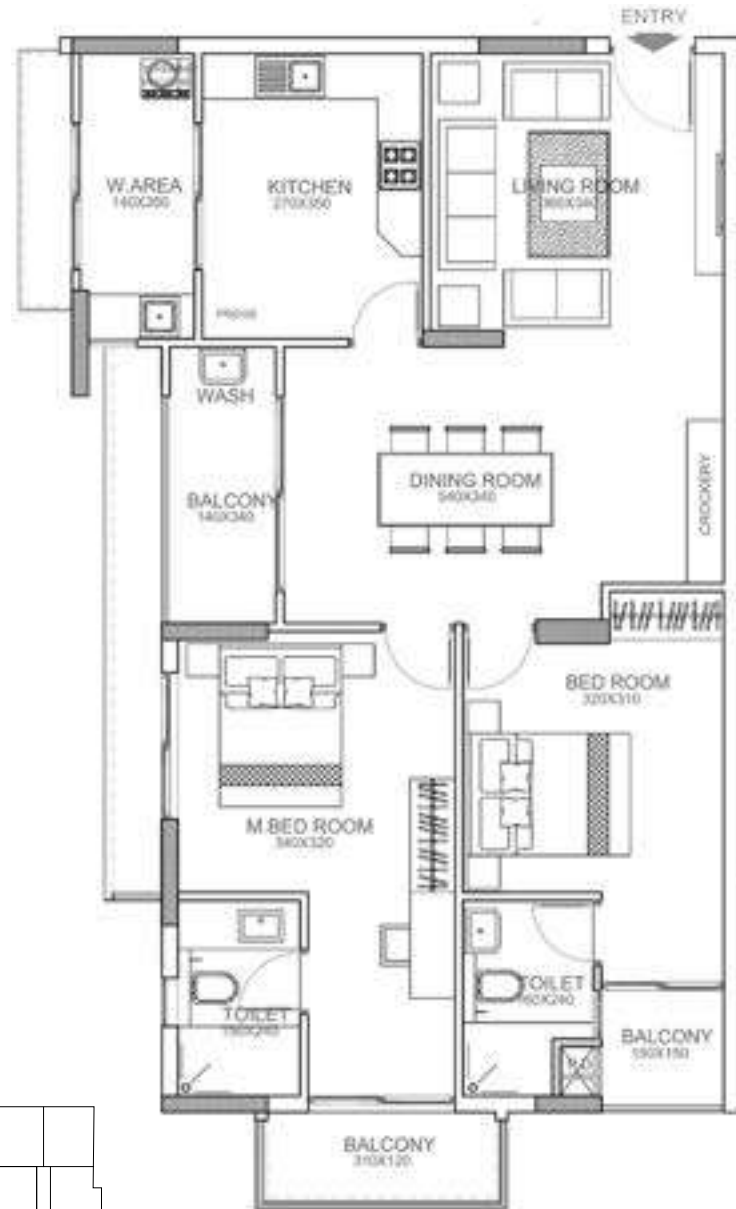
FLOOR PLAN - TOWER A



TYPE 5
3BHK 1709 SQFT



FLOOR PLAN - TOWER A



TYPE 6

2BHK 1432 SQFT



impact
milestone



A milestone in living experience

The Impact Milestone is a paradigm of urban architecture and design. Walk in through the gates and you will be greeted with beautifully landscaped expanses of greenery harmonized with delightful water features and fabulous fountains.





Life, as you like it!

A short distance from the bustling city, yet a whole world away. Whether you prefer to soak in the calmness of nature or be in the thick of a buzzing city life, we've picked the perfect location for your home. An independent 1.7- acre plot landscaped to envious magnificence, the Impact Milestone is planned to perfection. Just under a kilometer from the TechnoPark and only 1.5 km away from Green Fields Stadium in Karyavattom the strategic location of Impact Milestone ensures that you're never too far from anywhere.





A welcome in grandeur for you and your guests

The doors open into a breathtaking designer lobby where state-of-the-art design and construction quality welcomes you. Take the lifts to your apartment or just loiter around in the lobby, a difficult decision!



Details for the discerning

Every home is planned to perfection while every little luxury is detailed beyond compare. Featuring spacious homes, unparalleled leisure facilities and remarkable opportunities for your children, the Impact Milestone is simply the ideal place to live in.





Peace of mind forms part of our standard package

Impact Milestone is a distinct approach to living, especially for young families. From finishes to fittings and amenities to lifestyle benefits, everything has been exceptionally thought of.





Champion your child's future

Impact Milestone has been conceived with a unique concept in mind - a home where your children can flourish. We've created homes that cater to the needs of your children. Be it art, sport or holistic living, our experts will ensure that your children benefit from nothing but the very best. That's why Impact Milestone is a safe and secure haven where your children will grow to the best of their abilities.





The best of all worlds

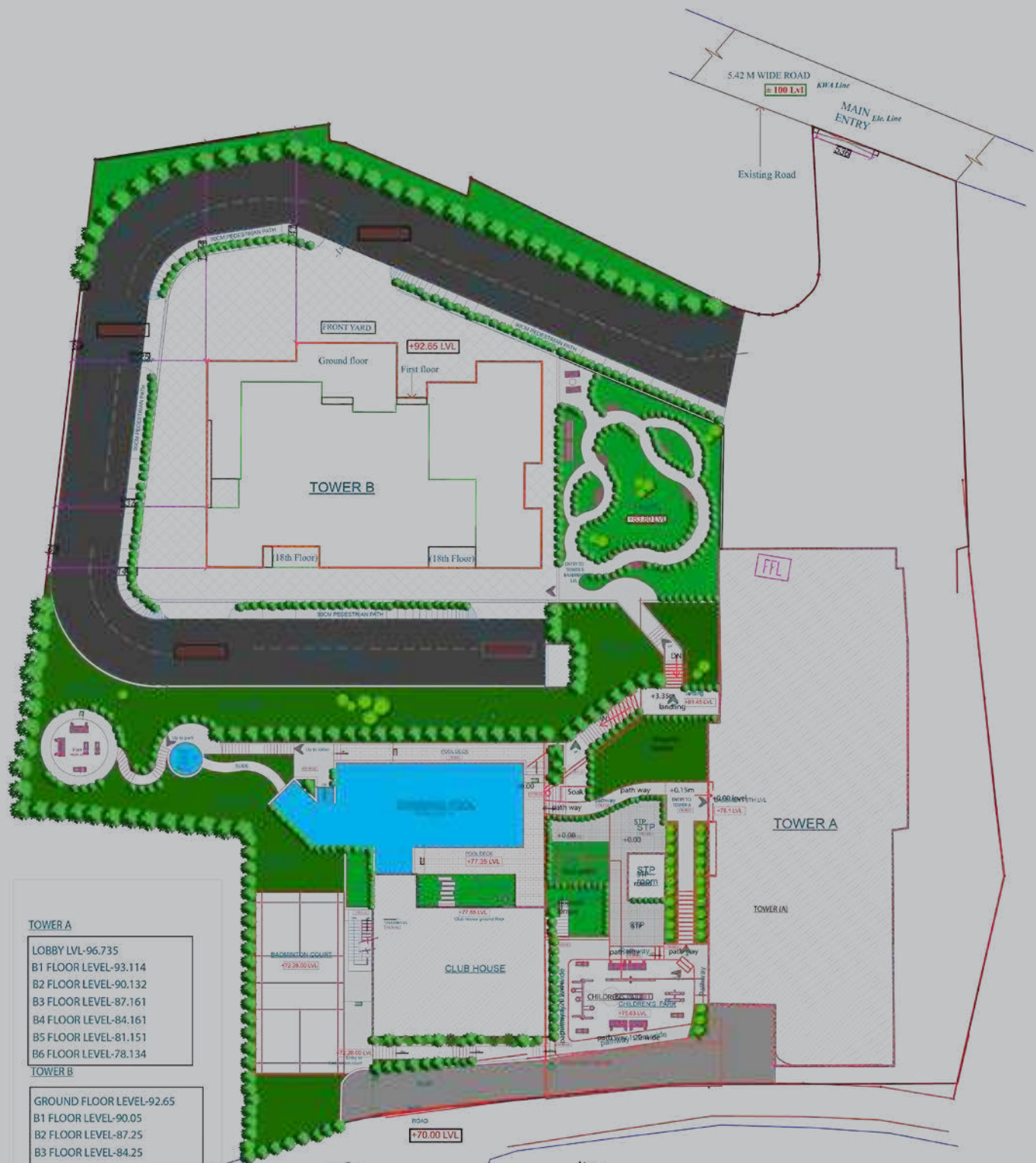
New world refinement meets relaxation at the Impact Milestone. Fill up on fitness at the fully equipped air-conditioned gymnasiums, separate for him and her. For those who seek to hone their sports skills, there's also a choice of billiards and badminton facilities.





Have an amphibious occupation

You could take a dip in the fabulous swimming pool while your kids splash it out in the kids pool, simply unwind in the Jacuzzi or even sweat out your day's stress at the steam room.



TOWER A	
LOBBY LVL	96.735
B1 FLOOR LEVEL	93.114
B2 FLOOR LEVEL	90.132
B3 FLOOR LEVEL	87.161
B4 FLOOR LEVEL	84.161
B5 FLOOR LEVEL	81.151
B6 FLOOR LEVEL	78.134
TOWER B	
GROUND FLOOR LEVEL	92.65
B1 FLOOR LEVEL	90.05
B2 FLOOR LEVEL	87.25
B3 FLOOR LEVEL	84.25
CLUB HOUSE	
FIRST FLOOR LEVEL	81.85
GROUND FLOOR LEVEL	78.55
B1 FLOOR LEVEL	75.25



PROPOSED MASTER PLAN